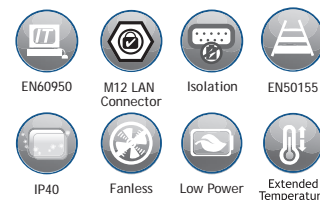


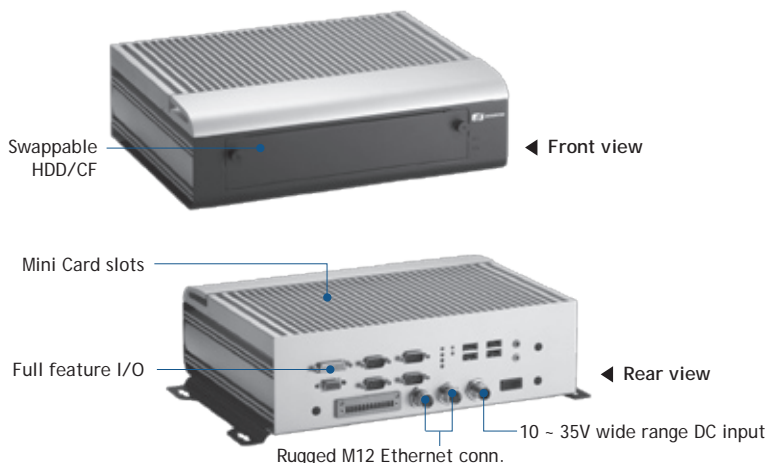
tBOX320-852-FL

Fanless Embedded System with Intel® Core™2 Duo Processor 2.26 GHz and Intel® GM45 Chipset for Railway PC



Features

- Supports onboard Intel® Core™2 Duo SP9300 2.26 GHz Intel® Celeron® M 723 1.2 GHz processor
- Intel® GM45 + ICH9M chipset
- Fanless operation
- Operatin temperature range of -25°C ~ +55°C
- 4 isolated RS-232/422/485 ports
- High performance onboard DDR3-800/1066 2 GB DRAM
- One 2.5" swappable SATA drive bay, 1 internal SATA drive bay and one CompactFlash™
- 2 internal PCI Express Mini Card slots with one SIM slot
- Lockable I/O interface and M12 LAN connector



Specifications

Standard Color	Silver-Black	Expansion Interface	2 x PCI Express Mini Card 1 x SIM card
Construction	Aluminum extrusion and heavy-duty steel, IP40	System Indicator	1 x green LED for system power-on 1 x red LED for HDD active 1 x green LED for LAN1 link 1 x green/yellow LED for LAN1 speed 1 x green LED for LAN2 link 1 x green/yellow LED for LAN2 speed
CPU	Onboard Intel® Core™2 Duo SP9300 processor up to 2.26 GHz	Power Supply	DC 12-32V input with isolation support Default rating: DC24V
System Memory	Onboard DDR3-800/1066 2 GB DRAM	Operating Temperature	-25°C ~ +55°C (77°F ~ 130°F) (with W.T. HDD)
Chipset	Intel® GM45 + ICH9M	Storage Temperature	-40°C ~ +80°C (-40°F ~ +176°F)
BIOS	AMI	Humidity	10% ~ 90% , non-condensing
System I/O Outlet	4 x isolated RS-232/422/485 (COM 1 ~ 4), console re-direction supported 1 x VGA 1 x DVI-D 1 x HD Audio (Mic-in/Line-out) 2 x 10/100/1000Mbps Ethernet (M12 female D-code for 10/100Mbps) 4 x USB 2.0 1 x isolated DIO (6-IN & 2-OUT) 1 x V _{oc} power input connector 1 x isolated DI/DO power input connector 3 x antenna opening	Vibration Endurance	2 Grms (5-500Hz, X, Y, Z directions)
Watchdog Timer	255 levels, 1-255 sec.	Dimensions	288 mm (11.33") (W) x 211 mm (8.3") (D) x 85.7 mm (3.37") (H)
Storage	2 x 2.5" SATA HDD drive bay 1 x CompactFlash™	Weight (net/gross)	TBD
		Certification	CE, EN50155, EN50121 (ongoing)
		EOS Support	XPE, WinCE, Linux

*XPE: Windows® XP Embedded

Ordering Information

Standard	
tBOX320-852-FL -2.26G-DC	Fanless embedded system with Intel® Core™2 Duo SP9300 2.26 GHz processor, 4 COM, 4 USB, CF, dual HDD support and onboard 2 GB DRAM
tBOX320-852-FL -1.2G-DC	Fanless embedded system with Intel® Celeron® M 723 1.2 GHz processor, 4 COM, 4 USB, CF, dual HDD support and onboard 2 GB DRAM
Optional	
2.5" SATA HDD	40 GB or above
CompactFlash™	1 GB or above

*Specifications and certifications are based on options and may vary.

3G module	826K3101010E
Wifi module	849WM520100E
Wifi+Bluetooth	82231560120E
GPS module	826K3101030E
Graphic accelerator codec	849XM100000E
M12 LAN cable	594N3202710E
M12 power cable	594B8120B20E

Expansion & Installation



Lockable I/O connector



Easy access opening for HDD & CF

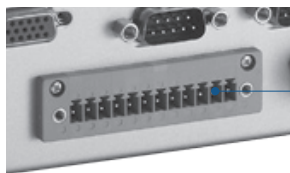


M12 type connector

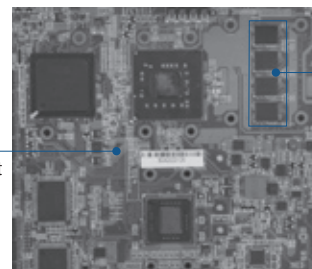


SIM slot

2 x Mini Card



Isolated digital I/O



BGA type CPU & chipset

Onboard 2 GB DDR3 DRAM

Packing List

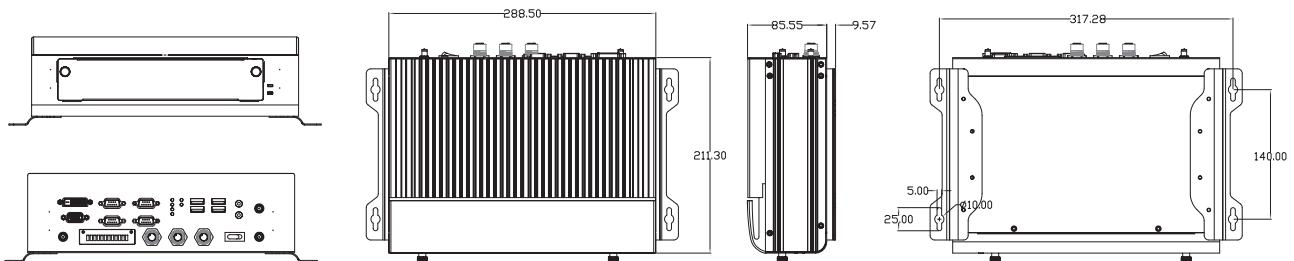
- 1 x quick manual
- 1 x driver CD
- 1 x screw pack
- 4 x foot pad
- 4 x HDD antivibration damper
- 1 x wallmount Kit

Power Protection

DC Version

- OVP (over voltage protection)
- UVP (under voltage protection)
- SCP (short circuit protection)

Dimensions



* All specifications and photos are subject to change without notice.