



Industrial 6-Port Unmanaged Fast Ethernet Switch

■ ■ EH2306

RoHS compliant

Technology

- 10/100BaseT(X) (RJ45)
- Broadcast storm protection
- Support IEEE 802.3/ 802.3u/ 802.3x
- 10/100M, Full/Half-Duplex, MDI/MDI-X auto-detection

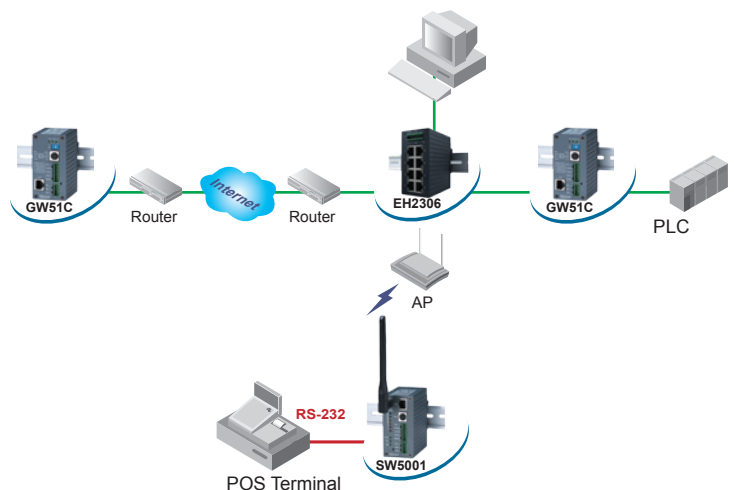
Reliability

- Redundant dual DC power inputs
- Operating temperature ranges from -10~70°C
- Rugged high-strength housing
- DIN-Rail or wall mounting ability

The EH2306 with 6 RJ-45 ports has a metal housing and is designed to work in the industrial environment, such as in hazardous locations that comply with CE, FCC, UL and RoHS standards.

The EH2306 protects itself from receiving too many broadcast packets. During normal use, broadcast packets will be forwarded to all ports except the source port. However, it will discard broadcast or multicast packets if the number of those packets exceeds a threshold in a preset period of time. When the preset period expires (about 800ms), it will then resume receiving broadcast or multicast packets until the threshold is reached again.

The EH2306 provides two redundant power inputs that can be connected simultaneously to wide-range DC power sources. If one of the power inputs failure, the other live source acts as a backup to provide the EH2306 the power it needs automatically.



Industrial 6-Port Unmanaged Fast Ethernet Switch

➔ **EH2306**

Specifications	
Technology	Standards: IEEE802.3, 802.3u, 802.3x
	Processing Type: Store and Forward
	Flow Control: IEEE802.3x flow control, backpressure flow control
Interface	RJ45 Ports: 10/100BaseT(X) auto negotiation speed Full/Half-duplex mode, and auto MDI/MDI-X connection
	LED Indicators: Power, 10/100M, Fault
Power Requirement	Input Voltage: 9~30 VDC, Dual inputs
	Consumption: 4.5 Watts Max
	Connector: Removable 3-pin Terminal Block for power input Reverse Polarity Protection: Present
Physical Characteristics	Housing: IP50 protection, metal housing
	Dimension: 45.2mm x 90mm x 78mm (W x H x D)
	Weight: 255g
Environmental Limits	Operating Temperature: -10°C ~ 70°C (14°F ~ 158°F)
	Storage Temperature: -40°C ~ 85°C (-40°F ~ 185°F)
	Ambient Relative Humidity: 5%~95% non-condensing
Regulatory Approvals	UL(Safety): UL60950-1,CSA C22.2 No.60950-1-03
	FCC(EMI): FCC 47 CFR Part15, Subpart B, Class A ICES-003, Class A ANSI C63.4-2003
	CE(EMI): EN 55022:1988+A1:2000+A2:2003, Class A EN 61000-3-2:2000, Class A EN 61000-3-3: 1995+A1:2001
	CE(EMS): EN 55024:1998+A1:2001+A2:2003 IEC 61000-4-2:2001 IEC 61000-4-3:2002+A1:2002 IEC 61000-4-4:2004 IEC 61000-4-5:2001 IEC 61000-4-6:2003+A1:2004 IEC 61000-4-8:2001 IEC 61000-4-11:2004
	Shock: IEC 60068-2-27
	Free Fall: IEC 60068-2-32
	Vibration: IEC 60068-2-6
	RoHS: Lead(Pb) Free
	MTBF: 455736 hrs(25°C) / 52.02 years(25°C)
	Warranty: 5 years

Ordering Information			
Model Name	Port Interface		
Extended Temperature (-10°C ~ 70°C)	10/100BaseT(X)	100BaseFX	
		Multi Mode ST Connector	Single Mode SC Connector
EH2306	6	----	----

Optional Accessories

US315-12(US/EU) : AC100~240V/DC12V ; 5.08mm pitch terminal block

Mechanical Dimensions(unit=mm)

