



Rugged 13 Slot PCI Expansion System

With Surveillance Pro 2 Remote Monitoring and SNMP Capability

Model PI3RR-TEL



Increase server functionality and monitor the condition of critical components

- Add thirteen PCI slots to servers, desktop or laptop computers
- Includes redundant power supply and built-in LCD monitoring system
- Compatible with the Simple Network Management Protocol (SNMP)
- Expansion chassis supports 5 volt PCI, universal PCI and PCI-X cards
- Easy installation, no software required

The Magma PI3RR-TEL provides a simple solution for expanding the PCI expansion capability of your computer or server. The expansion chassis contains thirteen PCI slots that connect to the host computer through a host card and I-meter expansion cable.

Rugged COTS Rack-mount Chassis

PI3RR-TEL is a rugged COTS (Commercial-Off-The-Shelf) expansion system designed specifically for industrial telephony and military-grade configurations requiring additional PCI slots and remote monitoring capability. The expansion system is designed to fit conveniently into any rack cabinet, and the included card hold down system keeps your cards securely in place.

Remote Monitoring

In addition to the rugged chassis, hot-swappable redundant power supply and field-replaceable high volume fans, the PI3RR-TEL also features a critical component monitoring system inside the chassis. The Surveillance Pro 2 monitoring system adds the ability to remotely monitor the status of the PI3RR-TEL through a built-in web server and Ethernet

connection. Surveillance Pro 2 monitors the power supply, fans, and chassis temperature, alerting you of any problems by sounding an audible alarm, sending an email, and displaying a message on the digital display on the front monitor. For convenience, the system can also be monitored remotely from an internet browser allowing you to retrieve the information that is displayed on the LCD of the chassis in near real time without leaving your desk.



Cost-Effective Migration and Increased I/O Capacity

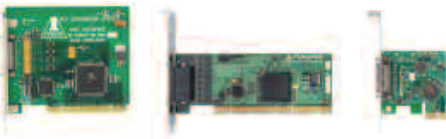
Magma expansion solutions provide a migration path to computers with a limited number of built-in PCI slots or no PCI slots at all. Magma products provide increased I/O capacity and scalability because multiple expansion systems can be combined to provide an almost unlimited number of PCI slots* to a single computer. This type of

scalability is especially useful in industries such as telecom, data acquisition, video monitoring, server storage, and manufacturing test fixtures.

*As defined by the PCI Local Bus Specification, the theoretical maximum per single computer is 255 PCI buses.

Multiple host interface cards provide easy connection to practically any computer

Desktop and Server Connections (PCI and PCI Express®)



Laptop Connections (CardBus and ExpressCard)



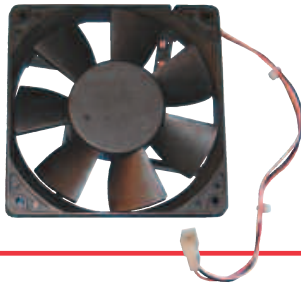
Front LCD reports status for internal temperature, fans and power supply.



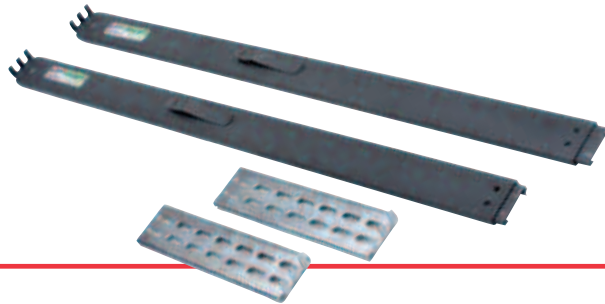
Hot-swappable, hot-pluggable, redundant, 400W power supply for high availability applications.



Field replaceable high volume cooling fans keep chassis and cards cool.



Optional Chassis Trak® rack slides allows entire chassis to be removed and replaced easily from a 4-post rack cabinet.

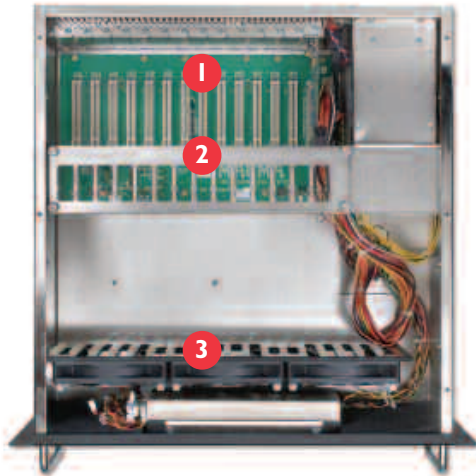


Benefits:

- Rugged solution for adding PCI slots
- Multiple expansion systems can be used with a single computer
- Power supply, fans, and chassis temperature constantly monitored for failure status
- Equipped with LCD display for visual failure status and audible alarm
- Surveillance Pro 2 provides failure alert via email or web browser
- Supports SNMP, enabling monitoring using industry-standard management information bases (MIBs)
- Field deployable in harsh environments

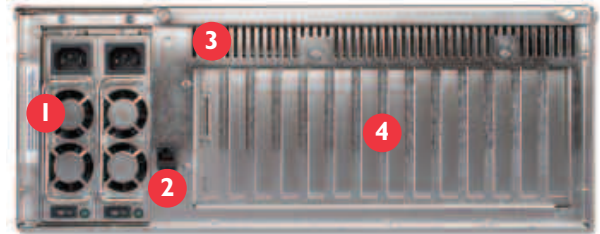
Features:

- Compatible with servers, desktop and laptop computers
- Easy Plug and Play installation
- Includes 1-meter expansion cable
- 32-bit/33MHz 13 slot backplane
- All slots support full-length universal and legacy 5 volt only PCI cards
- 4U, rugged black rack-mount enclosure
- Constant critical component monitoring
- Designed to provide prompt correction when fault occurs
- Equipped with superior EMI control, vibration, shock and moisture resistance
- PCI card hold down bar prevents cards from being dislodged during transportation
- Redundant Power Supply
- Field-replaceable cooling fans dedicated to cooling PCI cards
- Optional Chassis Trak® rack slide kit for rack cabinet installation
- Designed to meet MIL-STD-461E



PI3RR-TEL – Top View

1. Thirteen slot PCI backplane
2. PCI card hold down bar
3. Three cooling fans
4. Expansion cable
5. Host interface cards



PI3RR-TEL – Rear View

1. Redundant, hot-swappable power supply
2. RJ45 Ethernet connection for SNMP monitoring
3. Expansion cable connection
4. PCI card slot openings



How to Buy:

All MAGMA products can be purchased online at www.magma.com or through a reseller.

Model Names:

PI3RR-TEL: 13 Slot PCI Expansion System with standard PCI host card
 SUBPCIHIF64LP: Low Profile PCI host card option
 SUBPEHIFX1: x1 PCI Express® host card option
 SUBCBHIF: CardBus host card option

SUBEC54: ExpressCard/54 module option
 SUBEC34: ExpressCard/34 module option
 SUBCBL1.5HF: 1.5 meter cable option
 RSLIDES-X: Chassis Trak® rack slides with extender bracket (18", 24", 26", 28" lengths)

Specifications:

Backplane	Rack Installation	Supported Operating Systems
13 PCI slots (32-bit/33MHz) PCI Local Bus Specification: Revision 2.2 PCI Bridge Architecture Specification: Revision 1.2	Optional Chassis Trak® rack slide kit	Windows XP/2000/Server 2003 Mac OS X Linux Kernel 2.6+ Solaris
Cable	Chassis Power Supply	
1-meter PCI expansion cable Optional 1.5-meter length	Power Supply Redundant 400W AC Active PFC	
Interconnect Bandwidth	AC Input 100 - 240 VAC	
132 MB/sec (Theoretical Max. of PCI 32/33)	Input Frequency 8.0/4.0A for 115/230 VAC	
Enclosure	Inrush Current 60A/80A max for 115/230 VAC per power module	
4U Black Rack-mount Hardened 16 gauge steel 19" x 7" x 18" 35 lbs or 15.9 kg	DC Output 400W max	
System Cooling	+5V 35A max	
Three 120 mm 92 CFM backplane fans One fan included in each power supply module	-5V 0.5A maximum	
Host Connections and Power Consumption	+12V 28A maximum	
Universal PCI 32/33: 0.63W max; 5V @ 0.125A; Low Profile PCI (64/33): 0.86W max; 3.3V @ 0.25A x1 PCI Express®: 0.69W max; 3.3V @ 0.21A CardBus (PCMCIA): 0.42W max; 3.3V @ 0.125A ExpressCard: 0.81W max; 3.3V @ 0.21A; 1.5V @ 0.08A	-12V 1.2A maximum	
	+3.3V 25A maximum	
	+5Vsb 2.0 maximum	
	378W maximum of 5V, 3.3V and 12V combined	
	Environmental	
	Ambient Temperature: 0° to 40° C, Storage Temperature: -20° to 60° Relative Humidity: 5% to 85%, non-condensing	
	MTBF	
	53,000 hours	
	Regulatory Compliance	
	FCC Class B Verified CE Certified	