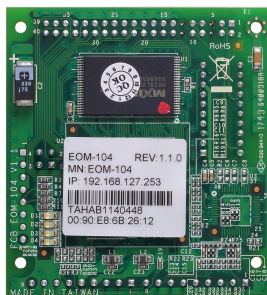


# EOM-104 Series

4-port embedded managed Ethernet switch modules



## Features and Benefits

- 10/100BaseT(X) and 100BaseFX Ethernet interfaces
- Turbo Ring and RSTP/STP for network redundancy
- SNMP and email alerts for event trapping and notifications
- Two-thirds the size of a business card
- Low power consumption
- -40 to 75°C operating temperature range

## Certifications



## Introduction

The EOM-104 Series is designed for device manufacturers who would like to embed Ethernet modules in their products to enhance performance and reliability. The EOM-104 Series provides an easy and cost-effective integrated solution for adding an Ethernet switch module to an existing product.

The modules support 10/100M Ethernet transmission and come with Turbo Ring's fast recovery time of under 20 ms. The EOM-104 Series provides a rich set of peripherals, such as Turbo Ring Enable and GPIO programming pins, and is an ideal solution for embedded Ethernet applications.

## Specifications

### Ethernet Interface

#### Standards

IEEE 802.3 for 10BaseT  
 IEEE 802.3u for 100BaseT(X) and 100BaseFX  
 IEEE 802.3x for flow control  
 IEEE 802.1p for Class of Service  
 IEEE 802.1D-2004 for Spanning Tree Protocol  
 IEEE 802.1w for Rapid Spanning Tree Protocol

### Ethernet Software Features

#### Protocols

BOOTP, DHCP Client, HTTP, RARP, RMON, SMTP, SNMPv1/v2c/v3, Syslog, Telnet, TFTP

#### MIB

Bridge MIB, Ethernet-like MIB, MIB-II, P-BRIDGE MIB, RMON MIB Groups 1, 2, 3, 9, RSTP MIB

### Switch Properties

#### MAC Table Size

1 K

#### Packet Buffer Size

512 kbits

## Ethernet Interface

10/100BaseT(X) Port	EOM-104: 4 EOM-104-FO: 2
100BaseFX Port	EOM-104-FO: 2 EOM-104-FO 20PCS: 2 EOM-104-FO Evaluation Kit: 2
Connector	1 connector with 2 x 20 pins, 2 connectors with 1 x 9 pins, and 1 connector with 2 x 2 pins

## Serial Interface

Console Port	RS-232 (TxD, RxD, DTR, DSR)
--------------	-----------------------------

## Ethernet Interface

GPIO	4 x Programmable I/O pins
------	---------------------------

## Power Parameters

Input Current	EOM-104: 0.48 A @ 3.3 VDC EOM-104-FO: 1.1 A @ 3.3 VDC
---------------	--

## Physical Characteristics

Dimensions	54 x 60 x 8.25 mm (2.13 x 2.36 x 0.32 in)
Weight	21 g (0.046 lb)

## Environmental Limits

Operating Temperature	-40 to 75°C (-40 to 167°F)
Storage Temperature (package included)	-40 to 85°C (-40 to 185°F)
Ambient Relative Humidity	5 to 95% (non-condensing)

## Standards and Certifications

EMC	EN 55032/24
EMI	CISPR 32, FCC Part 15B Class A

## Warranty

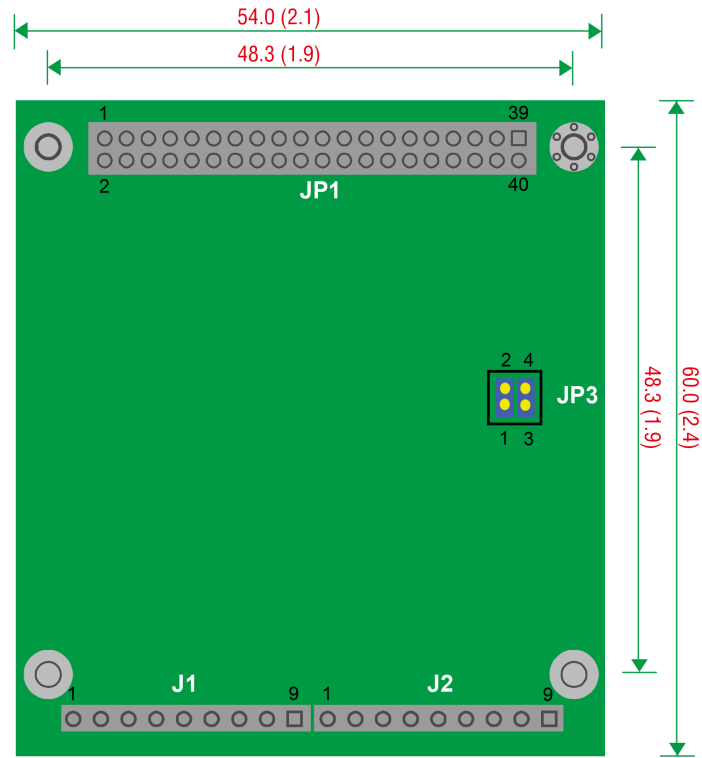
Warranty Period	5 years
Details	See <a href="http://www.moxa.com/warranty">www.moxa.com/warranty</a>

## Package Contents

Device	EOM-104: 1 x EOM-104 module EOM-104 20PCS: 20 x EOM-104 module EOM-104 Evaluation Kit: 1 x EOM-104 module with evaluation board EOM-104-FO: 1 x EOM-104-FO module EOM-104-FO 20PCS: 20 x EOM-104-FO module EOM-104-FO Evaluation Kit: 1 x EOM-104-FO module with evaluation board
Power Supply	EOM-104/104-FO Evaluation Kit: 1 x universal power adapter, 2 x power cord
Cable	1 x Null modem serial cable, 1 x Ethernet crossover cable (EOM-104/104-FO Evaluation Kit) 1 x accessory pack (EOM-104/104-FO, EOM-104/104-FO Evaluation Kit) 20 x accessory pack (EOM-104 20PCS, EM-104-FO 20PCS)
Documentation	1 x document and software CD 1 x warranty card

## Dimensions

Unit: mm (inch)



## Ordering Information

Model Name	10/100BaseT(X) Ports	100BaseFX Ports	20 pcs per package	Evaluation Kit	Operating Temp.
EOM-104	4	-	-	-	-40 to 75°C
EOM-104 20PCS	4	-	✓	-	-40 to 75°C
EOM-104 Evaluation Kit	4	-	-	1	-40 to 75°C
EOM-104-FO	2	2	-	-	-40 to 75°C
EOM-104-FO 20PCS	2	2	✓	-	-40 to 75°C
EOM-104-FO Evaluation Kit	2	2	-	1	-40 to 75°C

## Accessories (sold separately)

### Software

MXview

Industrial network management software designed for converged automation networks