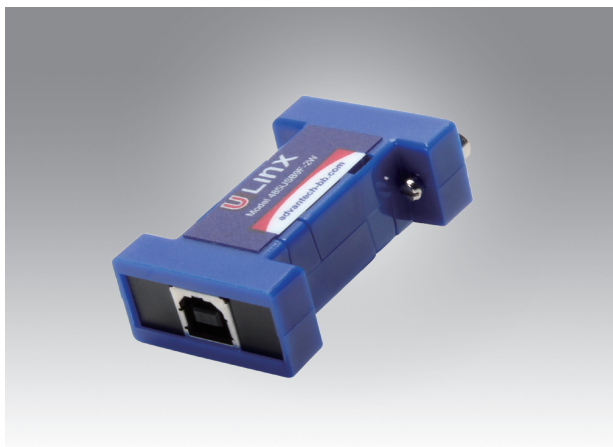


## BB-485USB9F-2W BB-485USB9F-2W-LS

### USB to RS-485 Miniature Converters



#### Features

- Connect RS-485 devices to your USB port
- Data rates: 921.6 kbps (RS-485); 12 Mbps (USB)
- Quick, convenient in-line installation
- USB port powered
- USB 2.0 (12 Mbps) compatible
- Small – fits easily into laptop bag; perfect for field service applications
- (1) USB cable included
- Locked Serial Number versions

#### Specifications

##### Serial Technology

- **RS-485 2-Wire** Data A(-), Data B(+), Ground
- **Connector** DB9 Female
- **Data Rate** Up to 921.6 Kbps

##### USB Technology

- **Connector** USB Type B Female
- **Standard** 2.0 (Backward Compatible)
- **Data Rate** 12 Mbps

##### Power

- **Source** USB Port
- **Input Voltage** 5 v<sub>DC</sub>
- **Consumption** ~ 0.5 W (Low power device, draws less than 100 mA)

##### Software

- **Windows O/S** XP, 7 (32/64 bit), 8 (32/64 bit), 8.1 (32/64), 10 (32/64)

##### Mechanical

- **Dimensions** 58.0 x 32.0 x 16.0 mm
- **Enclosure** In-line mounted, plastic
- **Weight** 04.3 g with USB cable

##### Environmental

- **Operating Temperature** 0 to +70 °C
- **Storage Temperature** -40 to +85 °C
- **Operating Humidity** 0 to 95 % (non-condensing)

##### Meantime Between Failures (MTBF)

- **MTBF 2-Wire** 2130833 hours
- **MTBF 4-Wire** 1869313 hours
- **MTBF Method** Parts Count Reliability Prediction

##### Approvals, Directives, Standards

- **Approvals** FCC, CE
- **EU** 2014/30/EU  
2015/863/EU (RoHS)
- **EMC** EN 55022:2010 + AC

#### Ordering Information

- **BB-485USB9F-2W** USB to RS-485 2-Wire Converter
- **BB-485USB9F-2W-LS** USB to RS-485 2-Wire Converter (Locked Serial Number)

##### Accessories – sold separately

- **BB-USBAMB-3F** 0.91 m USB Cable, Type A male, to Type B male (one included)
- **BB-USBAMB-6F** 1.83 m USB Cable, Type A male, to Type B male

#### Dimensions

Unit: mm

