

DEVICE SPECIFICATIONS

NI cDAQ™-9188XT

NI CompactDAQ Extended Temperature Rugged Eight-Slot Ethernet Chassis

These specifications are for the cDAQ-9188XT chassis only. These specifications are typical at 25 °C unless otherwise noted. For the C Series module specifications, refer to the documentation for the C Series module you are using.

Analog Input

Input FIFO size	127 samples per slot
Maximum sample rate ¹	Determined by the C Series module or modules
Timing accuracy ²	50 ppm of sample rate
Timing resolution ²	12.5 ns
Number of channels supported	Determined by the C Series module or modules

Analog Output

Number of channels supported	
Hardware-timed task	
Onboard regeneration	16
Non-regeneration	Determined by the C Series module or modules
Non-hardware-timed task	Determined by the C Series module or modules
Maximum update rate	
Onboard regeneration	1.6 MS/s (multi-channel, aggregate)
Non-regeneration	Determined by the C Series module or modules

¹ Performance dependent on type of installed C Series module and number of channels in the task.

² Does not include group delay. For more information, refer to the documentation for each C Series module.

Timing accuracy	50 ppm of sample rate
Timing resolution	12.5 ns
Output FIFO size	
Onboard regeneration	8,191 samples shared among channels used
Non-regeneration	127 samples per slot
AO waveform modes	Non-periodic waveform, periodic waveform regeneration mode from onboard memory, periodic waveform regeneration from host buffer including dynamic update

Digital Waveform Characteristics

Waveform acquisition (DI) FIFO	
Parallel modules	511 samples per slot
Serial modules	63 samples per slot
Waveform generation (DO) FIFO	
Parallel modules	
Slots 1 to 4	2,047 samples per slot
Slots 5 to 8	1,023 samples per slot
Serial modules	63 samples per slot



Note When parallel modules in a digital task are in slots 1 through 4, FIFO is 2,047 samples per slot for all slots. When any parallel module in a digital task is in slots 5 through 8, FIFO is 1,023 samples per slot for all eight slots.

Digital input sample clock frequency	
Streaming to application memory	System-dependent
Finite	0 MHz to 10 MHz
Digital output sample clock frequency	
Streaming from application memory	System-dependent
Regeneration from FIFO	0 MHz to 10 MHz
Finite	0 MHz to 10 MHz
Timing accuracy	50 ppm

General-Purpose Counters/Timers

Number of counters/timers	4
Resolution	32 bits
Counter measurements	Edge counting, pulse, semi-period, period, two-edge separation, pulse width
Position measurements	X1, X2, X4 quadrature encoding with Channel Z reloading; two-pulse encoding
Output applications	Pulse, pulse train with dynamic updates, frequency division, equivalent time sampling
Internal base clocks	80 MHz, 20 MHz, 100 kHz
External base clock frequency	0 MHz to 20 MHz
Base clock accuracy	50 ppm
Output frequency	0 MHz to 20 MHz
Inputs	Gate, Source, HW_Arm, Aux, A, B, Z, Up_Down
Routing options for inputs	Any module PFI, chassis PFI, analog trigger, many internal signals
FIFO	Dedicated 127-sample FIFO

Frequency Generator

Number of channels	1
Base clocks	20 MHz, 10 MHz, 100 kHz
Divisors	1 to 16 (integers)
Base clock accuracy	50 ppm
Output	Any chassis PFI or module PFI terminal

Module PFI Characteristics

Functionality	Static digital input, static digital output, timing input, and timing output
Timing output sources ³	Many analog input, analog output, counter, digital input, and digital output timing signals

³ Actual available signals are dependent on type of installed C Series module.

Timing input frequency	0 MHz to 20 MHz
Timing output frequency	0 MHz to 20 MHz

Chassis PFI Characteristics

Maximum input or output frequency	1 MHz
Cable length	3 m (10 ft)
Cable impedance	50 Ω
PFI 0, PFI 1 connectors	BNC
Power-on state	High impedance

Table 1. Input/Output Voltage Protection

Voltage	Minimum	Maximum
Input	-20 V	25 V
Output	-15 V	20 V

Maximum operating conditions⁴

I_{OL} output low current	8 mA maximum
I_{OH} output high current	-8 mA maximum

Table 2. DC Input Characteristics

Voltage	Minimum	Maximum
Positive going threshold	1.43 V	2.28 V
Negative going threshold	0.86 V	1.53 V
Hysteresis	0.48 V	0.87 V

⁴ Stresses beyond those listed under *Maximum operating conditions* may cause permanent damage to the chassis.

Table 3. DC Output Characteristics

Voltage	Conditions	Minimum	Maximum
High	—	—	5.25 V
	Sourcing 100 μ A	4.65 V	—
	Sourcing 2 mA	3.60 V	—
	Sourcing 3.5 mA	3.44 V	—
Low	Sinking 100 μ A	—	0.10 V
	Sinking 2 mA	—	0.64 V
	Sinking 3.5 mA	—	0.80 V

Digital Triggers

Source	Any chassis PFI or module PFI terminal
Polarity	Software-selectable for most signals
Analog input function	Start Trigger, Reference Trigger, Pause Trigger, Sample Clock, Sample Clock Timebase
Analog output function	Start Trigger, Pause Trigger, Sample Clock, Sample Clock Timebase
Counter/timer function	Gate, Source, HW_Arm, Aux, A, B, Z, Up_Down

Module I/O States

At power-on	Module-dependent. Refer to the documentation for each C Series module.
-------------	--

Network Interface

Network protocols	TCP/IP, UDP
Network ports used	HTTP:80 (configuration only), TCP:3580; UDP:5353 (configuration only), TCP:5353 (configuration only); TCP:31415; UDP:7865 (configuration only), UDP:8473 (configuration only)
Network IP configuration	DHCP + Link-Local, DHCP, Static, Link-Local
High-performance data streams	7
Data stream types available	Analog input, analog output, digital input, digital output, counter/timer input, counter/timer output, NI-XNET ⁵
Default MTU size	1500 bytes
Jumbo frame support	Up to 9000 bytes

Ethernet

Network interface	1000 Base-TX, full-duplex; 1000 Base-TX, half-duplex; 100 Base-TX, full-duplex; 100 Base-TX, half-duplex; 10 Base-T, full-duplex; 10 Base-T, half-duplex
Communication rates	10/100/1000 Mbps, auto-negotiated
Maximum cabling distance	100 m/segment

Power Requirements



Caution The protection provided by the NI cDAQ-9188XT chassis can be impaired if it is used in a manner not described in the *NI cDAQ-9188XT User Manual*.




Note Some C Series modules have additional power requirements. For more information about C Series module power requirements, refer to the documentation for each C Series module.

⁵ When a session is active, CAN or LIN (NI-XNET) C Series modules use a total of two data streams regardless of the number of NI-XNET modules in the chassis.



Note Sleep mode for C Series modules is not supported in the NI cDAQ-9188XT.

Voltage input range	9 V to 30 V (measured at the NI cDAQ-9188XT power connector)
Maximum required input power ⁶	15 W
 Caution	You must use a UL Listed ITE power supply marked LPS with the NI cDAQ-9188XT.
Recommended power supply	15 W, 24 VDC
Power input connector	2 positions 3.5 mm pitch mini-combicon screw terminal with screw flanges, Sauro CTMH020F8-0N002
Power input mating connector	Sauro CTF020V8, Phoenix Contact 1714977, or equivalent

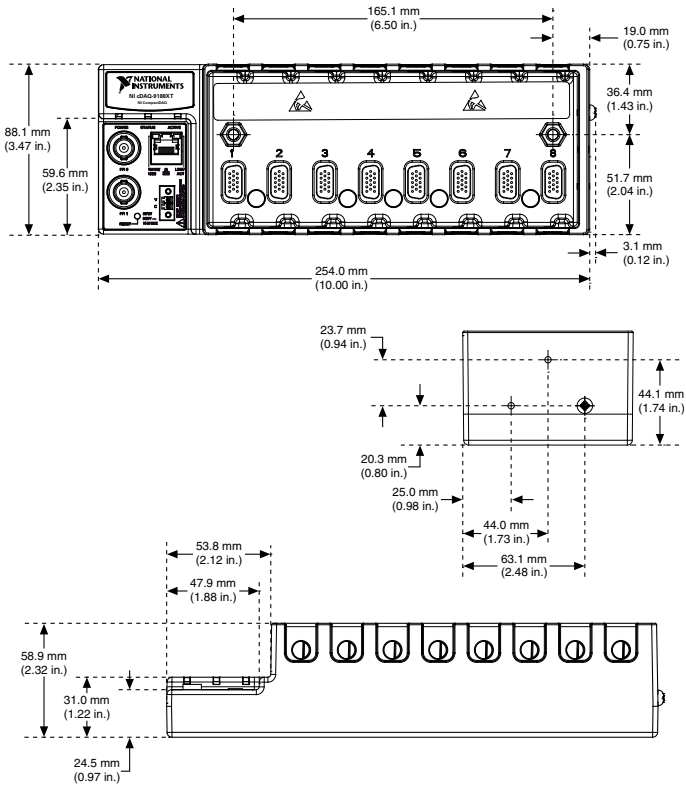
Physical Characteristics

Weight (unloaded)	900 g (31.7 oz)
Dimensions (unloaded)	254.0 mm × 88.1 mm × 58.9 mm (10.00 in. × 3.47 in. × 2.32 in.) Refer to the following figure.
Screw-terminal wiring	
Gauge	2.0 mm ² to 0.2 mm ² (14 AWG to 24 AWG) copper conductor wire with 6 mm (0.24 in.) of insulation stripped from the end
Temperature rating	85 °C minimum
Wires per screw terminal	1
Torque for screw terminals	0.2 N · m to 0.25 N · m (1.8 lb · in. to 2.2 lb · in.)
Connector securement	
Securement type	Screw flanges provided
Torque for screw flanges	0.4 N · m (3.5 lb · in.)

If you need to clean the chassis, wipe it with a dry towel.

⁶ Includes maximum 1 W module load per slot across rated temperature and product variations.

Figure 1. NI cDAQ-9188XT Dimensions



Safety Voltages

Connect only voltages that are within these limits.

V terminal to C terminal

30 V maximum, Measurement Category I

Measurement Category I is for measurements performed on circuits not directly connected to the electrical distribution system referred to as MAINS voltage. MAINS is a hazardous live electrical supply system that powers equipment. This category is for measurements of voltages from specially protected secondary circuits. Such voltage measurements include signal levels,

special equipment, limited-energy parts of equipment, circuits powered by regulated low-voltage sources, and electronics.



Caution Do not connect the system to signals or use for measurements within Measurement Categories II, III, or IV.



Note Measurement Categories CAT I and CAT O (Other) are equivalent. These test and measurement circuits are not intended for direct connection to the MAINS building installations of Measurement Categories CAT II, CAT III, or CAT IV.

Environmental

Operating temperature (IEC 60068-2-1 and IEC 60068-2-2) -40 °C to 70 °C⁷



Caution To maintain product performance and accuracy specifications when the ambient temperature is between 60 °C and 70 °C, you must mount the chassis horizontally to a metal panel or surface using the screw holes or the panel mount kit. Measure the ambient temperature at each side of the CompactDAQ system 63.5 mm (2.5 in.) from the side and 25.4 mm (1.0 in.) from the rear cover of the system. For further information about mounting configurations, go to ni.com/info and enter the Info Code `cdaqmounting`.

Storage temperature (IEC 60068-2-1 and IEC 60068-2-2) -40 °C to 85 °C

Ingress protection IP 30

Operating humidity (IEC 60068-2-56) 10% to 90% RH, noncondensing

Storage humidity (IEC 60068-2-56) 5% to 95% RH, noncondensing

Pollution Degree (IEC 60664) 2

Maximum altitude 5,000 m

Indoor use only.

⁷ When operating the NI cDAQ-9188XT in temperatures below 0 °C, you must use the PS-15 power supply or another power supply rated for below 0 °C.

Hazardous Locations

U.S. (UL)	Class I, Division 2, Groups A, B, C, D, T4; Class I, Zone 2, AEx nA IIC T4
Canada (C-UL)	Class I, Division 2, Groups A, B, C, D, T4; Class I, Zone 2, Ex nA IIC T4
Europe (ATEX) and International (IECEX)	Ex nA IIC T4 Gc

Shock and Vibration

To meet these specifications, you must panel mount the NI cDAQ-9188XT system and affix ferrules to the ends of the terminal lines.

Operating vibration

Random (IEC 60068-2-64)	5 g_{rms} , 10 Hz to 500 Hz
Sinusoidal (IEC 60068-2-6)	5 g, 10 Hz to 500 Hz
Operating shock (IEC 60068-2-27)	30 g, 11 ms half sine, 50 g, 3 ms half sine, 18 shocks at 6 orientations

Safety and Hazardous Locations Standards

This product is designed to meet the requirements of the following electrical equipment safety standards for measurement, control, and laboratory use:

- IEC 61010-1, EN 61010-1
- UL 61010-1, CSA 61010-1
- EN 60079-0:2012, EN 60079-15:2010
- IEC 60079-0: Ed 6, IEC 60079-15; Ed 4
- UL 60079-0; Ed 6, UL 60079-15; Ed 4
- CSA 60079-0:2011, CSA 60079-15:2012



Note For UL and other safety certifications, refer to the product label or the [Online Product Certification](#) section.

Electromagnetic Compatibility

This product meets the requirements of the following EMC standards for electrical equipment for measurement, control, and laboratory use:

- EN 61326-1 (IEC 61326-1): Class A emissions; Basic immunity
- EN 55011 (CISPR 11): Group 1, Class A emissions

- EN 55022 (CISPR 22): Class A emissions
- EN 55024 (CISPR 24): Immunity
- AS/NZS CISPR 11: Group 1, Class A emissions
- AS/NZS CISPR 22: Class A emissions
- FCC 47 CFR Part 15B: Class A emissions
- ICES-001: Class A emissions



Note In the United States (per FCC 47 CFR), Class A equipment is intended for use in commercial, light-industrial, and heavy-industrial locations. In Europe, Canada, Australia and New Zealand (per CISPR 11) Class A equipment is intended for use only in heavy-industrial locations.



Note Group 1 equipment (per CISPR 11) is any industrial, scientific, or medical equipment that does not intentionally generate radio frequency energy for the treatment of material or inspection/analysis purposes.



Note For EMC declarations and certifications, and additional information, refer to the [Online Product Certification](#) section.

CE Compliance

This product meets the essential requirements of applicable European Directives, as follows:

- 2014/35/EU; Low-Voltage Directive (safety)
- 2014/30/EU; Electromagnetic Compatibility Directive (EMC)
- 2014/34/EU; Potentially Explosive Atmospheres (ATEX)

Online Product Certification

Refer to the product Declaration of Conformity (DoC) for additional regulatory compliance information. To obtain product certifications and the DoC for this product, visit ni.com/certification, search by model number or product line, and click the appropriate link in the Certification column.

Environmental Management

NI is committed to designing and manufacturing products in an environmentally responsible manner. NI recognizes that eliminating certain hazardous substances from our products is beneficial to the environment and to NI customers.

For additional environmental information, refer to the *Minimize Our Environmental Impact* web page at ni.com/environment. This page contains the environmental regulations and directives with which NI complies, as well as other environmental information not included in this document.

Waste Electrical and Electronic Equipment (WEEE)



EU Customers At the end of the product life cycle, all NI products must be disposed of according to local laws and regulations. For more information about how to recycle NI products in your region, visit ni.com/environment/weee.

电子信息产品污染控制管理办法（中国 RoHS）



中国客户 National Instruments 符合中国电子信息产品中限制使用某些有害物质指令 (RoHS)。关于 National Instruments 中国 RoHS 合规性信息，请登录 ni.com/environment/rohs_china。(For information about China RoHS compliance, go to ni.com/environment/rohs_china.)

Refer to the *NI Trademarks and Logo Guidelines* at ni.com/trademarks for information on NI trademarks. Other product and company names mentioned herein are trademarks or trade names of their respective companies. For patents covering NI products/technology, refer to the appropriate location: **Help>Patents** in your software, the `patents.txt` file on your media, or the *National Instruments Patent Notice* at ni.com/patents. You can find information about end-user license agreements (EULAs) and third-party legal notices in the readme file for your NI product. Refer to the *Export Compliance Information* at ni.com/legal/export-compliance for the NI global trade compliance policy and how to obtain relevant HTS codes, ECCNs, and other import/export data. NI MAKES NO EXPRESS OR IMPLIED WARRANTIES AS TO THE ACCURACY OF THE INFORMATION CONTAINED HEREIN AND SHALL NOT BE LIABLE FOR ANY ERRORS. U.S. Government Customers: The data contained in this manual was developed at private expense and is subject to the applicable limited rights and restricted data rights as set forth in FAR 52.227-14, DFAR 252.227-7014, and DFAR 252.227-7015.

© 2013—2016 National Instruments. All rights reserved.

370087C-01 Mar16