

PEAK 760VL2(LF)

Full-Size LGA775 Socket for Intel® Pentium® 4/ Celeron® D w/PCI Express and Gigabit LAN x 2

Main Features

- Single Socket LGA775, Supports Intel® Pentium® 4 with 533/800 MHz FSB up to 3.8 GHz
- DDR2 240-pin DIMM x 4, Supports Dual Channel DDR2 400/533 MHz up to 4 GB
- Intel® 82573L PCI Express Gigabit Ethernet LAN x 2
- SATA x 4, USB 2.0 x 6, COM port x 2
- RoHS Compliant

Product Overview

PEAK 760VL2(LF) is a member of the PICMG 1.0 High Performance single board computer family. It is NEXCOM's first RoHS compliant product available for mass delivery. It is increasingly hard to even get a Socket 478 Pentium 4 CPU on the market, the LGA775 Prescott CPU has now become the mainstream CPU from end of 2005. PEAK 760VL2(LF) will be the mainstream SBC board starting from 2006, regardless of CPU availability or RoHS compliance point of view. PEAK 760VL2(LF) hosts an Intel® Pentium® 4 processor for the LGA775 socket. It supports dual channel DDR2 with four DIMM sockets for up to 4 GB capacity, allowing the use of standard desktop memory and to take advantage of the dual channel memory access bandwidth. Furthermore, the PCI express x 1 lane is almost equal to the original PCI-X 64-bit/66 MHz PCI throughput, which gives the Gigabit Ethernet maximum throughput to provide high speed performance. PEAK 760VL2(LF) offers two PCIe Intel® 82573L Gigabit Ethernet Chips for an on-board dual Ethernet solution. All other features also follow the new technology trend, such as six USB 2.0 ports, four SATA, and a high performance Integrated Graphics engine, which all make the PEAK 760VL2(LF) a perfect solution.

Specifications

CPU Support

- Single socket LGA775
- Supports Intel® Pentium 4 with 533/800 MHz FSB for speeds up to 3.8 GHz
- Supports Hyper-Threading Technology

Main Memory

- Four 240-pin DIMM sockets, up to 4 GB Dual channel non-ECC DDR2 400/533 MHz
Note: 4 GB is a maximum spec according to the chipset, but due to I/O address issues, the actual memory support size might not reach the 4 GB maximum

Chipset

- Intel® 915GV and ICH6 chipset

BIOS

- Award System BIOS
- Plug & Play support
- Advanced Power Management and Advanced Configuration & Power Interface support

On-board LAN

- Intel 82573L PCI Express Gigabit Ethernet LAN x 2
- 2-pin header for extended LAN LED

Display

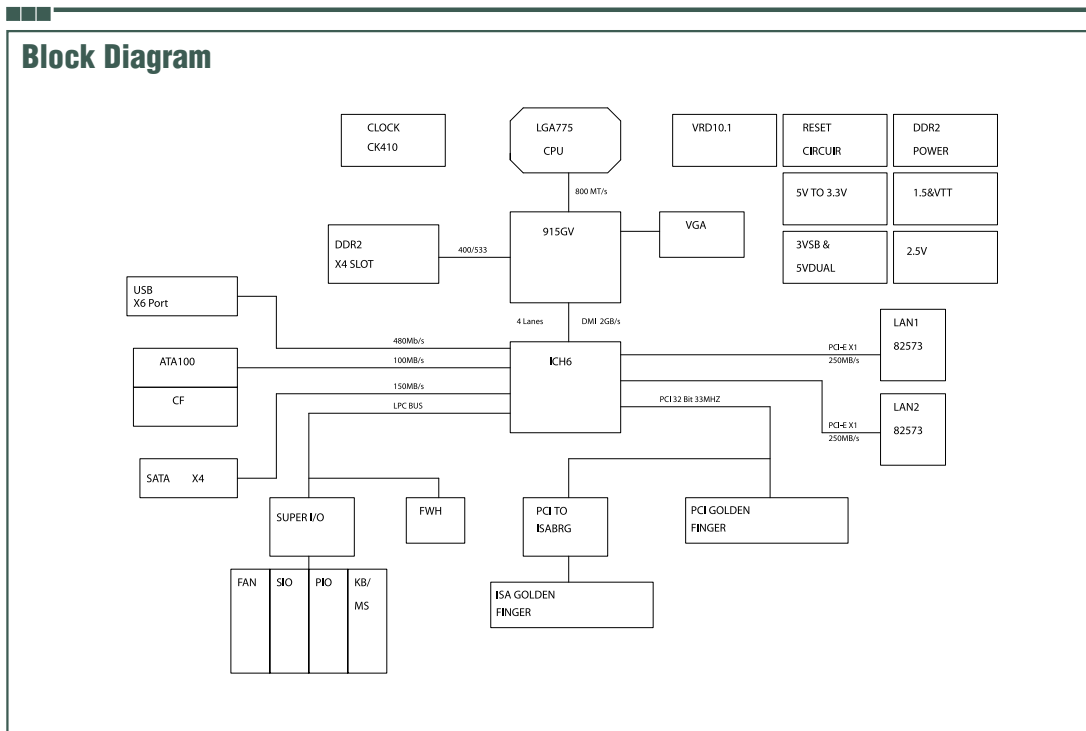
- Chipset w/built-in integrated graphics device
- Analog display supports up to 2048 x 1536 @ 85 Hz CRT

I/O Interface

- 10-pin box header x 2, supports RS232 only
- USB 2.0 port x 6 via 6-pin JST connector x 3, bandwidth: 480 Mb/s
- Ultra ATA 100/66/33, 40-pin connector x 1
- SATA HDD: 4 Serial ATA Ports, bandwidth: 150 MB/s
- Parallel port: 26-pin connector x 1
- Mini-DIN PS/2 Keyboard/Mouse x 1
- Floppy: 34-pin connector x 1
- Digital I/O Port: 4 in, 4 out with TTL level interface
- On-board buzzer x 1/4-pin for speaker/2-pin power-on button switch/2-pin header for SMBus 2.0
- 4-pin fan JST connector x 1 (For CPU); 3-pin fan connector x 2
- 5-pin connector x 1 for chassis or backplane front keyboard
- I/O On Bracket
- VGA DB-15 connector x 1
- RJ45 Gigabit Ethernet LAN port x 2
- Mini-DIN for Keyboard/Mouse x 1

Watchdog Timer

- 1-minute increments from 1 to 255 minutes
- 1-second increments from 1 to 255 seconds



On-board RTC

- On-chip RTC with battery backup
- External Li Battery x 1

Disk On Module

- Disk On Module: 2-pin power connector for DOM

ISA Support

- Through PCI to ISA Interface
- No ISA Master Device Support. / No Support for ISA DMA
- Maximum of 3 ISA slots supported

System Monitor

- System monitor controller from Super I/O
- 8 voltage (For +1.5 V, +3.3 V, +5 V, -5 V, +12 V, -12 V, Vcore and +5 Vsb)
- 2 temperature (For CPU and system)
- 3 fan speed monitors (one for CPU and 2 for systems)

Power Input

- Power source from backplane through PCI/ISA Golden Finger
- Supports both AT or ATX Power Supplies (Automatically)
- +3.3 V is converted from +5 V and not directly from backplane or power supply
- +5 Vsb (Standby power) is connected from backplane via a 3-pin connector
- 4-pin +12 V Power Input Connector

Power Requirements

- 5 V : 20 A
- 12 V: 15 A
- 5 Vsb : 1.5 A

Dimensions

- 338.58 mm (L) x 122 mm (W) (13.3" L x 3.8" W)

Environment

- Board level operating temperature: 0°C to 60°C
- Storage temperature: -20°C to 80°C
- Relative humidity: 10% to 90% (Non-condensing)

Certifications

- CE approval
- FCC Class A

Ordering information

- **PEAK 760VL(LF) (P/N: 1P0760VL00X0)** RoHS Compliant
PICMG Full-Size SBC, Intel 915GV Chipset, LGA775 P4 CPU (Prescott) up to 3.8 GHz, 533/800 MHz FSB, 32-bit/33 MHz PCI, Max. 4 GB DDR2 400 DIMM, VGA integrated
Intel 82573L PCI Express Gigabit Ethernet x 1, Serial ATA Ports x 4, Max 3 ISA Slots (Non-ISA Master & Non-ISA DMA) support through backplane.
- **PEAK 760VL2(LF) (P/N: 1P0760VL01X0)** RoHS Compliant
PICMG Full-Size SBC, Intel 915GV Chipset, LGA775 P4 CPU (Prescott) up to 3.8 GHz, 533/800 MHz FSB, 32-bit/33 MHz PCI, Max. 4 GB DDR2 400 DIMM, VGA integrated
Intel 82573L PCI Express Gigabit Ethernet x 2, Serial ATA Ports x 4, Max 3 ISA slots (Non-ISA Master & Non-ISA DMA) supported through backplane.