

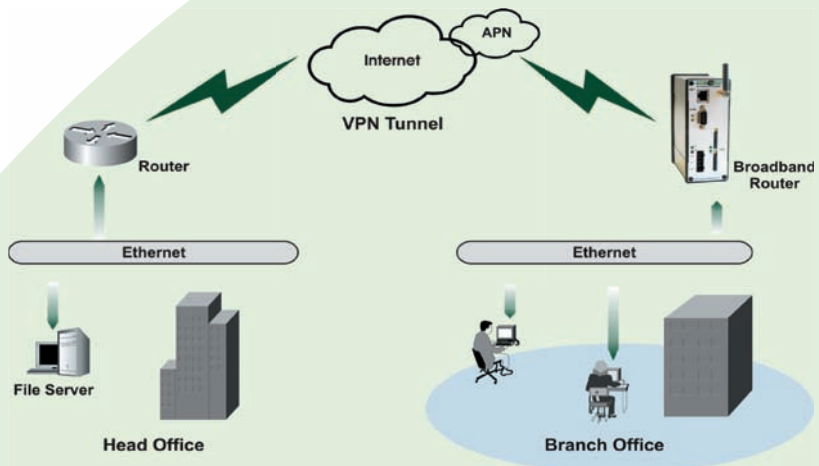
Wireless GSM Routers

Datasheet

Wireless GSM Data Communication

- Integrated GSM module
- Easy setup
- Dual-SIM redundancy
- Built in VPN client and Firewall
- Quick deployment
- Secure

Multenet's Wireless Routers are Cellular Routers that use mobile phone network infrastructure to provide data connections to networked devices anywhere that a cell-phone signal can be received. When fixed lines are not an option due to physical limitations such as mobile or remote sites, cellular communications provide a quick and easy to deploy solution by providing connectivity via GSM, GPRS, EDGE and HSDPA.



Mobile Router GPRS / EDGE

The Multenet Mobile Router has an integrated GSM GPRS / EDGE modem and is ideal for applications with low-bandwidth requirements such as Access Control, ATMs, POS applications or telemetry.



PROD0301

Broadband / HSDPA Router HSDPA

The Multenet Broadband Router with an integrated HSDPA modem, is capable of speeds up to 7.2 Mbps down and 384Kbps up. Ideal for primary or backup internet connectivity or high bandwidth applications such as video.



PROD0302 / 0303

Key Features Mobile / Broadband

- Dual-SIM with Failover
- Dynamic DNS *
- VRRP *
- PPPoE *
- Configurable IP Firewall
- VPN Tunneling (L2TP/PPTP)
- Masquerading / NAT
- Port Forwarding

Product Applications

- Telemetry
- Primary or Backup Corporate Connectivity
- ATM Connectivity
- Remote Access
- Point of Sale
- Internet Access

Technical Specification

Features

- Device network connectivity via UDP/IP and TCP/IP
- Device management via Web, Telnet, DHCP/TFTP, Serial, Windows & Linux configuration utility.
- Layer 3 routing
- PPP dial-in and dial-out connections with authentication (CHAP / PAP)
- SNMP v1, v2 (MIB-II) device monitoring
- DHCP Server / Client
- Configurable IP Firewall
- Masquerading (NAT)
- Port Forwarding
- VPN tunneling with data encryption (L2TP / PPTP)
- RTC with automatic time synchronization
- NTP Time Server
- Monitoring tools via web interface
- Firmware upgradeable via network (FTP) or serial
- Password Protection
- Failsafe upgrade *
- Dynamic DNS *
- IPSec with PSK *
- PPPoE *
- VRRP / + *

Hardware Specification

- **Mobile Router:** Integrated Siemens MC75 GSM/GPRS/EDGE
- **Broadband / HSDPA Router:** Integrated Novatel Wireless EU870D GSM / GPRS / EDGE / HSDPA
- ARM 9 Processor
- 32MB RAM, 8MB Flash
- 10/100 Base-T Ethernet interface with Auto-Sensing and Auto MDI / MDX
- RS-232 / RS-422 / RS-485 Serial interface
- LED indication for Ethernet, GSM, Serial and Power
- Antenna

Electrical Specification

- **Power Requirement:** 5W - 10V-30V DC or 10V-20V AC (Power Adaptor available as an option)
- Power connector on front for DIN Rail PSU Connection

Part Numbers

Mobile Router:	PROD0301
Broadband Router:	PROD0302
HSDPA Router	PROD0303
Power Adaptor: (220V):	PROD0925
DIN Rail Mounting Kit:	PROD0206
19" Rack Mounting Kit:	PROD0207

Software Specification

- **Network Protocols:** TCP/IP, UDP/IP, BootP/DHCP, TFTP, ICMP, ARP, Proxy ARP, Telnet, FTP, HTTP, SMTP, DNS, PPP, PPPoE *, SNMP (v1, v2), Redirector, VRRP *
- **Serial Protocols:** Raw, Redirector, TC500
- **Parity:** None, Even, Odd, Mark, Space
- **Flow control:** None, Hardware (RTS/CTS), Software (XON,XOFF)
- **Data Size:** 7,8
- **Stop bits:** 1,2
- Web Server
- Password Protection
- Firmware upgrade network or serial
- Multiple concurrent connections

* Only available on HSDPA Router

Physical Specification

- **Connectivity:** Ethernet (10/100 Base-T): RJ45, Serial Port (RS232/RS422/RS485): DB9 male
- **Enclosure:** Black anodized aluminium extrusion with stainless steel / aluminium faceplate.
- **Dimensions:** 131mm x 105mm x 54mm
- **Weight:** 500g
- **Temperature Range Operating:** -25 degrees Celsius to +70 degrees Celsius
- **Temperature Range Storage:** -20 degrees Celsius to 85 degrees Celsius

Standards Compliance

CE
RoHS
IEEE 802.2
IEEE 802.3
ICASA

Contact Multenet

Phone: +27 (0) 21 882 8811
FAX: +27 (0) 21 882 8825

Email: sales@multenet.com

Visit us: The Vineyard Centre
Cnr Adam Tas and Devon
Valley Rd, Stellenbosch